

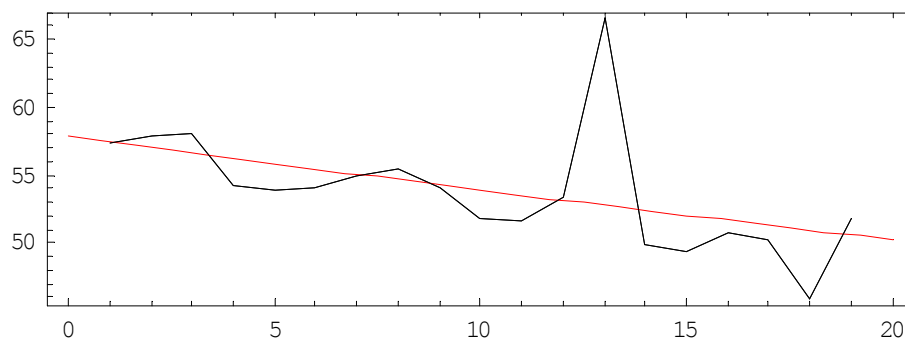
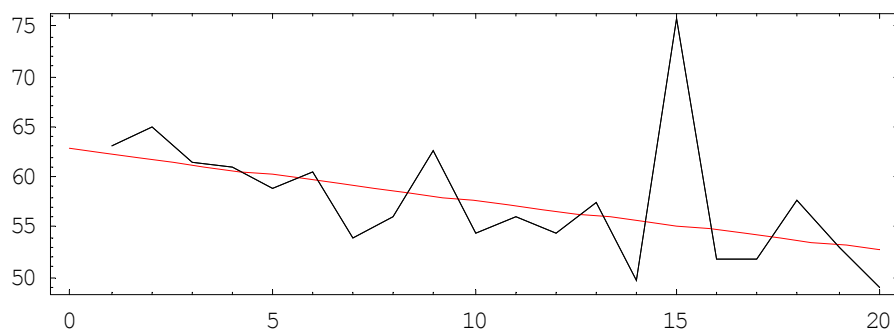
Reverse Conducting Slides

Mazurka Project Presentation Materials

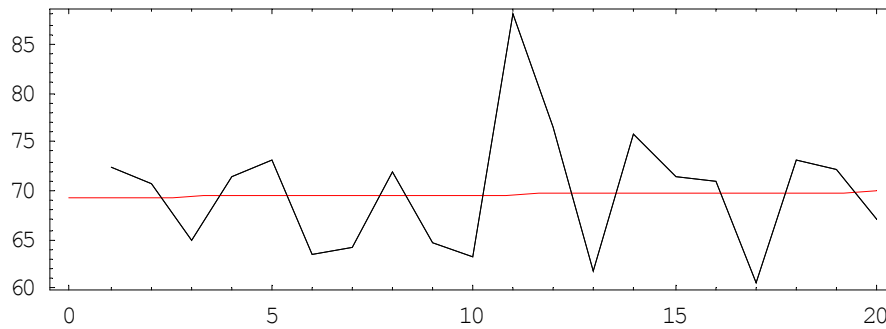
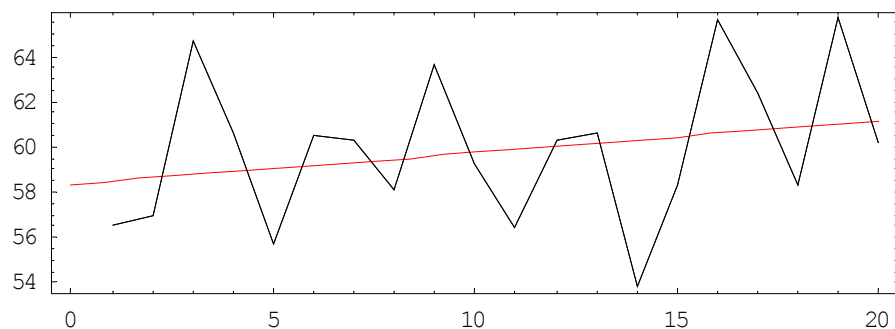
Version: 14 November 2005

Learning Curves for 4 Performances

Mazurka in F Minor, Op. 7, No. 3
Rosen 1989 **Friedman 1930**

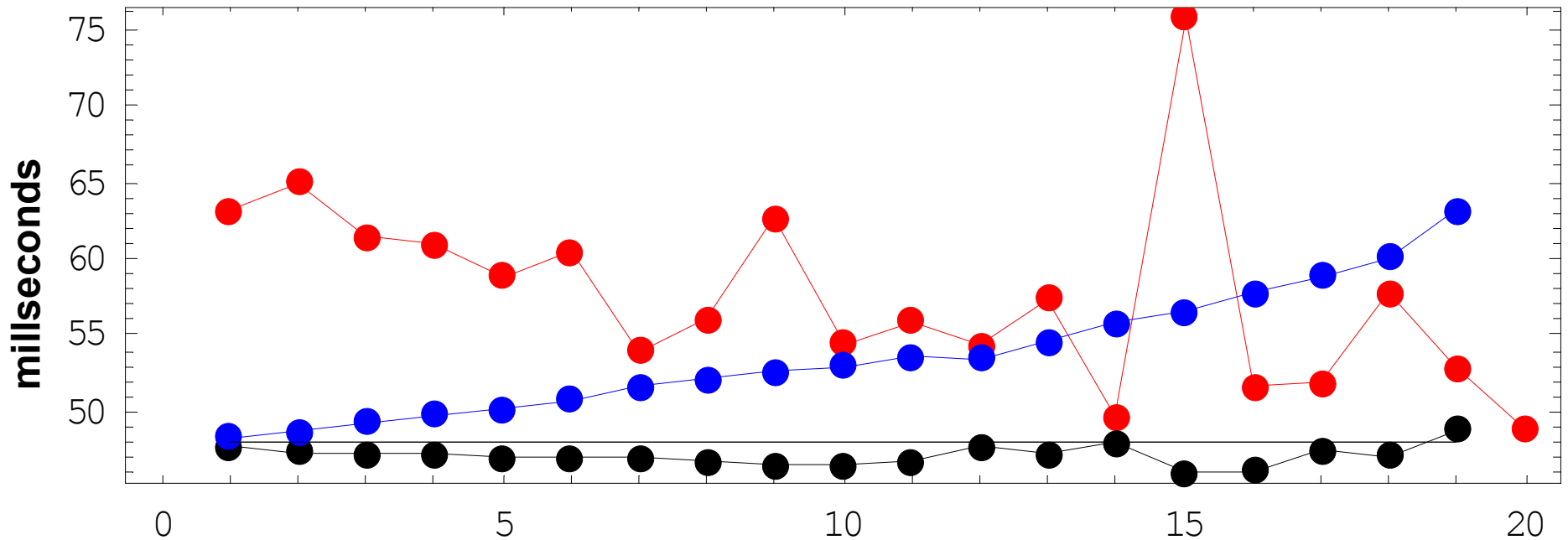


Mazurka in A Minor, Op. 7, No. 2
Chiu 1999 **Friedman 1930**



Average Displacement Errors

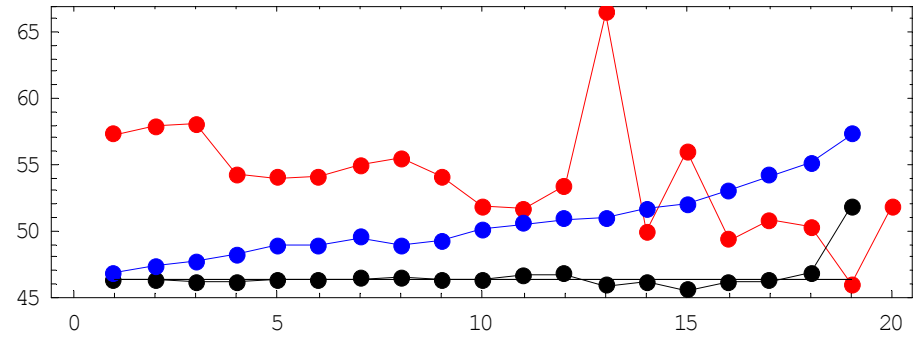
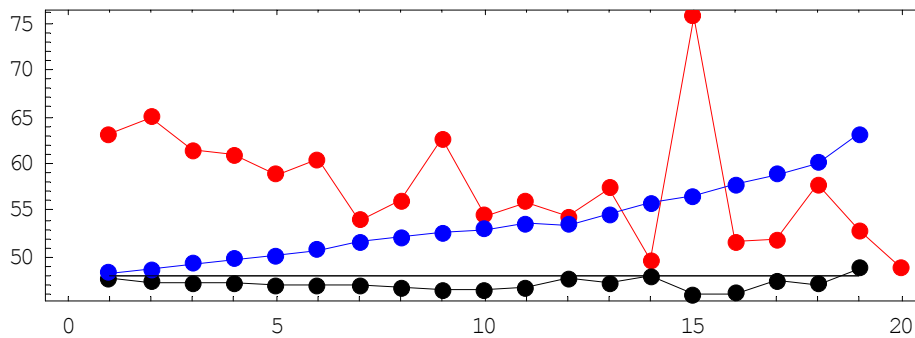
Mazurka in F Minor, Op. 7, No. 3
Rosen 1989



- Red line** = individual trial average displacement errors
- Blue line** = dropping more and more later trials
- Black line** = dropping more and more earlier trials

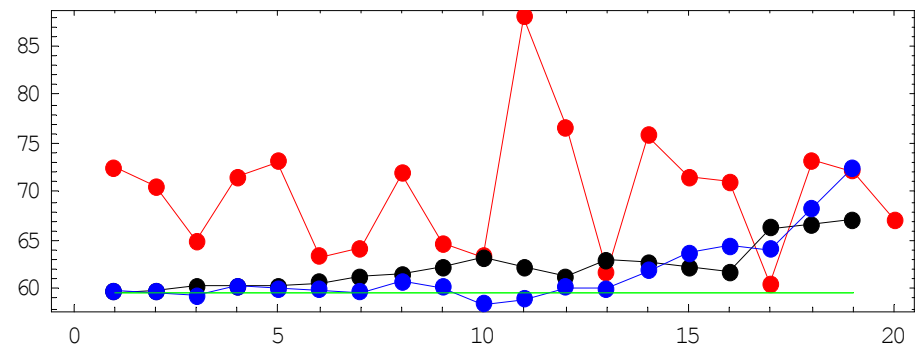
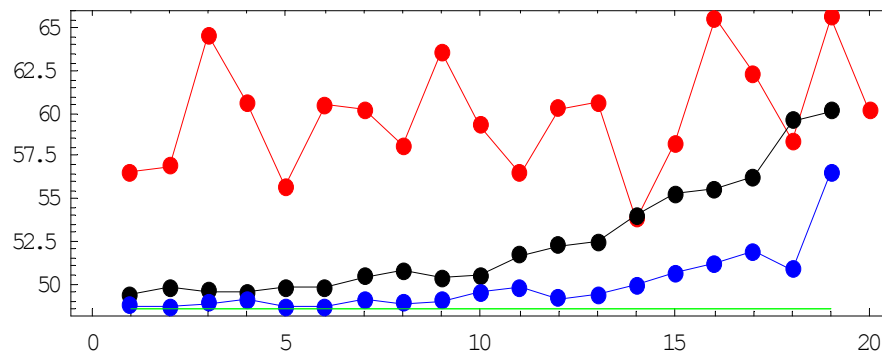
Average Displacement Errors (2)

Mazurka in F Minor, Op. 7, No. 3
Rosen 1989 **Friedman 1930**



*slower
tempo*

Mazurka in A Minor, Op. 7, No. 2
Chiu 1999 **Friedman 1930**

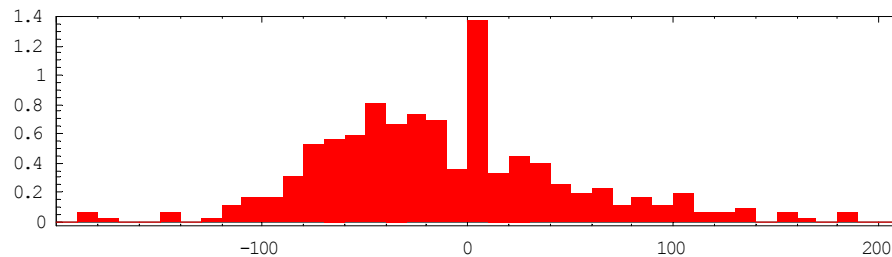
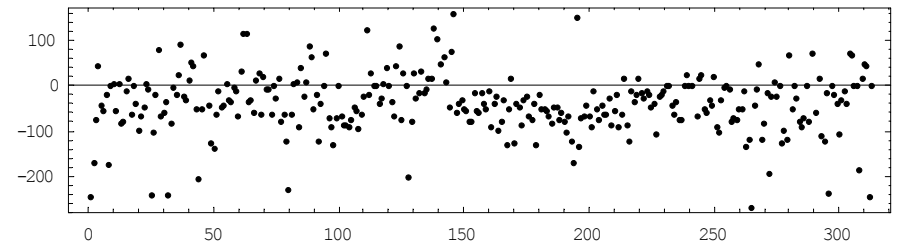
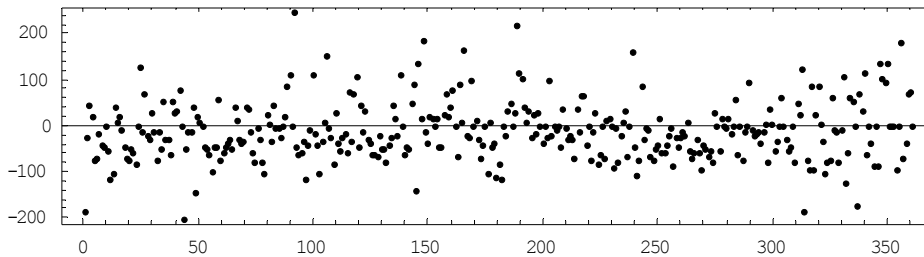


Correction Offsets

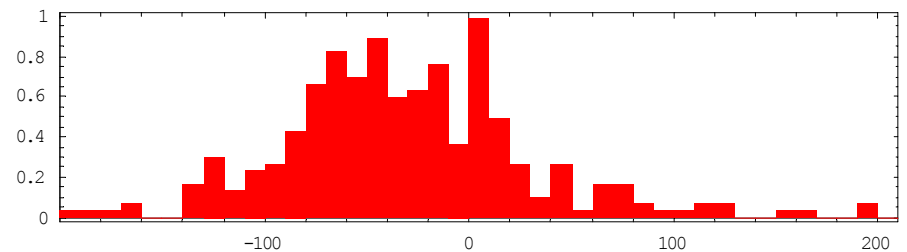
The top plots show the amount of time in milliseconds between the corrected beat times and the average manually tapped beat times. The lower plots display a histogram of the data in the top plots. The spike at 0 in the histograms is due to audible corrections having a resolution of 10 ms.

Mazurka in A Minor, Op. 7, No. 2

Chiu 1999 Friedman 1930



49 ms avg correction; -12 ms overall shift



60 ms avg correction; -36 ms overall shift

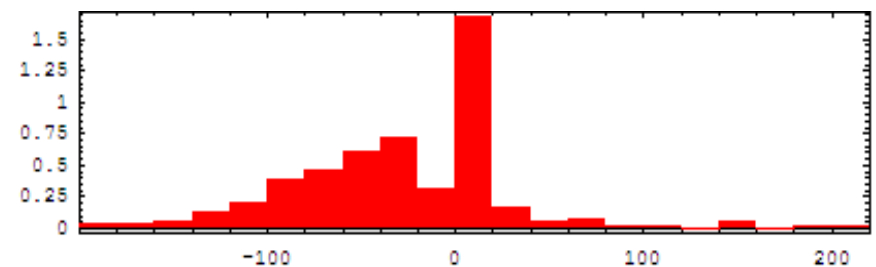
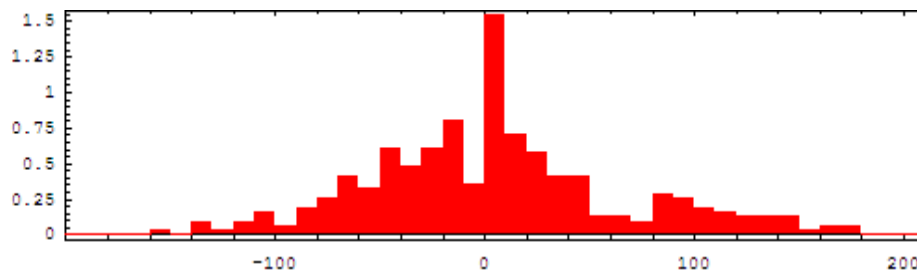
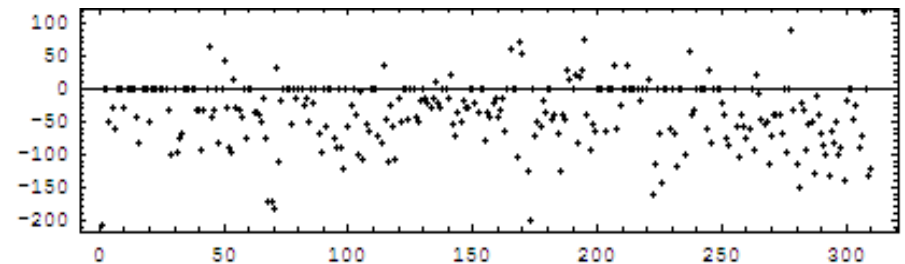
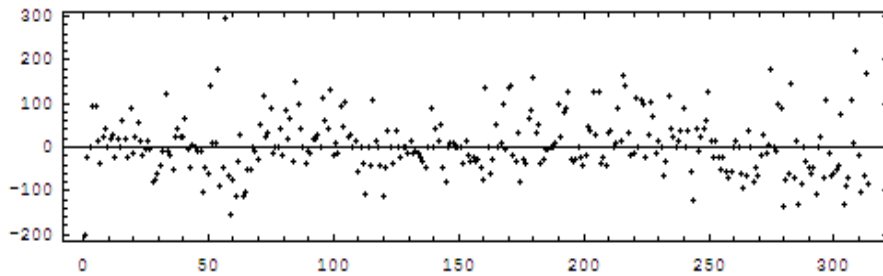
Correction Offsets (2)

The top plots show the amount of time in milliseconds between the corrected beat times and the average manually tapped beat times. The lower plots display a histogram of the data in the top plots. The spike at 0 in the histograms is due to audible corrections having a resolution of 10 ms.

Mazurka in F Minor, Op. 7, No. 3

Rosen 1989

Friedman 1930



48 ms avg correction; +5 ms overall shift

48 ms avg correction; -27 ms overall shift